



CARING FOR YOUR NEW PUPPY



Thank you for adopting a puppy from Save-a-Pet!



Food

Puppies at Save-a-Pet are fed Royal Canin Medium Junior pellets and a bit of tinned food.

If you decide to change your new puppy's diet we recommend that you make a slow transition to avoid stomach upsets. Purchase a small bag of Royal Canin Medium Junior and slowly begin introducing the new food over the course of 7 to 10 days, slowly increasing the amount of the new food. Alternatively put your puppy on a diet of chicken and well cooked rice/pasta for a few days and then slowly introduce the new food. You can also move them onto a dry food only diet by slowly reducing the amount of tinned food.

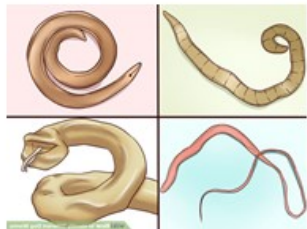
Vaccinations



All puppies at Save-a-Pet will have had their first vaccination before homing. Any vaccinations following adoption are for your own account at the veterinarian of your choice.

Please take careful note of when your puppy's next vaccination is due. It is vital to complete a puppy's course of vaccinations to protect it against diseases such as Parvo Virus (Cat flu), Distemper and Rabies.

Parasites



Your puppy will have been regularly dewormed at Save-a-Pet and a record kept on his/her vet card.

Deworming is recommended at the following schedule:

Every two weeks up to the age of 12 weeks.

Then every month up to the age of 6 months.

Then every three months throughout adulthood.



It is important to keep external parasites such as fleas and ticks under control as these can lead to discomfort, skin problems and illness. Your vet will be able to advise you on what products are on the market.



Identification

You will receive an identity disc for your puppy when you adopt him/her. We recommend that you get your puppy used to wearing a collar with the tag should they somehow manage to slip out of your yard.

Microchips are a great idea as they cannot be removed/come off and can be used to unquestionably prove that it is your dog. All welfare organisations and vets keep microchip scanners and will scan lost dogs. Your vet will be able to give you details on how the microchip is implanted and works.

BackHome
BioTec



Introductions

It is important to always remain calm and in control when introducing your puppy to your pets at home. You may find it beneficial to introduce dogs to each other in a neutral space, such as a park, where they can meet and then go home together. Do not fuss too much over your new puppy and be sure to give lots of love to your already established pets. Reward positive interactions with praise and treats.



Training

Save-a-Pet strongly recommends taking puppies for puppy classes where they will benefit from socialisation and you can learn skills such as house training, basic obedience and puppy care. It is a great way for you to bond with your puppy and nip any possible behavioural issues in the bud.

You may enjoy it so much that you decide to continue with obedience training!



Puppy Classes:

Mount Croix Animal Clinic's Eukanuba Puppy School - 041 374 3034



9th Avenue Veterinary Clinic Puppy School - 041 581 4394/5



Southern Cross Veterinary Clinic Puppy School - Tracey (083 3202832)



Walmer Vet Puppy School - 041 581 4000/041 581 4267



Puppy and Adult Dog Training:

Baakens Valley Dog School - 079 292 2305



The Dog School - Joan or Mike Saward-Dumbris: (041) 360 2528 or 082 775 4545



A CROSS the BREEDS – Dog Training School - 082 393 5975